

SUPPORTS IN THE COMMUNITY

SUPPORT PATHWAYS

FOR CHILDREN WITH DISABILITIES IN WEXFORD
INFORMATION BOOKLET FOR PARENTS AND CAREGIVERS





HOW TO USE THIS GUIDE

The booklet provides information on services and supports for disabled children and their families in Wexford.

We hope that this booklet can support you to access the right service or support at the right time.

To follow this guide:

Visually look out for symbols, colours or white coloured boxes.

Follow these Colours and Symbols



Health



Education



Community

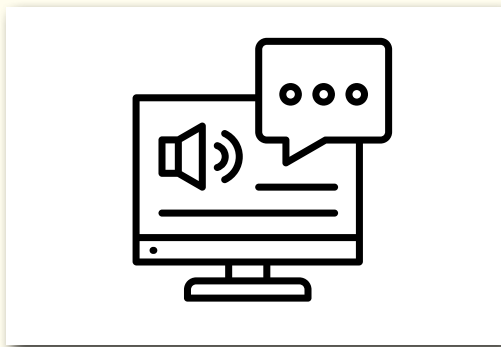


Finances



Social

You can also listen to this on your computer or phone.



Scan the QR code to link to all of the different services.



CONTENTS

USE GUIDE

2

CONTENTS

3

COMMUNITY SUPPORTS

4



HEALTH SUPPORTS

10



EDUCATION SUPPORTS

24



FINANCIAL SUPPORTS

37



SOCIAL ACTIVITIES FOR CHILDREN

42



FAQS

51

HEALTH SUPPORTS CONTACTS

58

1. COMMUNITY SUPPORTS



There are various community-based supports for parents of and for children with disabilities. These include:

- Family Resource Centres
- Parenting Programmes and Support Groups
- Social Media Support Groups
- Mental Health Supports



FAMILY RESOURCE CENTRES

Family Resource Centres are community hubs that offer support to families, including those raising children with disabilities. Here is how they can help:

- **Inclusive Activities:** Many Family Resource Centres run playgroups, youth clubs, and events that welcome children of all abilities.
- **Practical Support:** Staff can offer one-to-one help, social groups, or quiet spaces tailored to your child’s needs.
- **Information and Advice:** They can guide you through applying for supports like Domiciliary Care Allowance or Carer’s Allowance and help you understand your child’s rights.
- **Parent Support:** Family Resource Centres often host parent groups where you can connect with others, share experiences, and get emotional support.
- **Workshops:** You might find sessions on navigating the school system, managing stress, or accessing services.
- **Connecting You to Services:** If you’re unsure where to turn, Family Resource Centres can link you with local disability services, therapists, or advocacy groups.

You do not need a referral just reach out to your local centre to see what’s available.

1. COMMUNITY SUPPORTS



List of Family Resource Centres in Wexford

Gorey FRC

Mc Dermott Street, Gorey,
County Wexford
Eircode Y25KT98

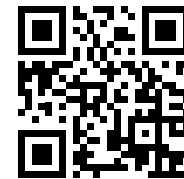
Phone 053 948 9017
Mobile 087 990 5403
Email info@goreyfrc.ie
goreyfamilyresourcecentre.ie



ARC FRC

Raheen, Clonroche,
Enniscorthy, Co Wexford
Eircode: Y21 T183

Phone: 051 442 888
Email: hello@raheenfrc.ie
arcfrc.ie



Southend FRC

Hantoon Rd, Maudlintown,
Co. Wexford
Eircode: Y35 T28A

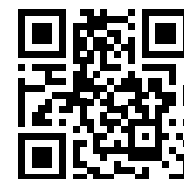
Phone: 053 912 6027
Email: frcsouthend@gmail.com
southendfrc.ie



Taghmon FRC

St Joseph Street, Taghmon,
Co. Wexford
Eircode: Y35 WTP3

Phone: 053 913 4465
Email: admin@taghmonfrc.ie
taghmonfrc.ie



South West FRC

Ramsgrange Centre, New Ross,
Co. Wexford
Eircode: Y35 WTP3

Phone: 051 389418
Email: manager@swwfrc.ie
swwfrc.ie



1. COMMUNITY SUPPORTS



Parenting Programmes

Various parenting supports and programmes (for example, Incredible Years Programme, Parents Plus Programmes) are offered by community organisations. Some of these may be specific and/or beneficial for families with children with additional needs, for example, Parents Plus Special Needs Programme, Parents Plus for ADHD.

Wexford Parents Hub

The purpose of the Wexford Parents Hub is to become a “one stop shop” for parents, providing easily accessible information on forthcoming talks and parenting programmes available in County Wexford. You can also keep up to date with the Wexford Parents Hub on the Facebook page and Instagram Page.

Facebook Instagram



For more information:

[Wexford Parents Hub | Wexford CYPSC](#)



1. COMMUNITY SUPPORTS



LOCAL PARENTING SUPPORT GROUPS

Advocates for Autism

This is a registered charity and company by limited guarantee, set up by a group of parents of children with Autism Spectrum Disorder (ASD) in 2011. The group is based in Gorey and offers support to families in the North Wexford area.

Advocates for Autism

Starlight Room, Room 21

Gorey Enterprise Centre, Gorey

Business Park, Ramstown, Gorey

Eircode: Y25 Y2C8

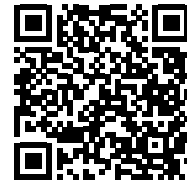
Mobile: 089 267 1122

Email:

fawexford@gmail.com

Facebook:

[AdvocatesAutismAFA](#)



Cottage Autism Network Wexford CLG

Cottage Autism Network is a voluntary organisation and registered charity based in County Wexford since 2004. They support autistic children, teenagers, and adults and their families by promoting inclusion, raising awareness, and creating a strong community. Most of the activities take place in Wexford Town and Enniscorthy, but families from all over Wexford are welcome.

Families with a child under 18 who has an autism diagnosis or is awaiting one, or individuals over 18 with a diagnosis or awaiting one, can join.

Cottage Autism Network

Wexford CLG. Suite 7,

Redmond Square Medical Centre,

4-7 Redmond Square, Co. Wexford.

Eircode: Y35 CYD2

Mobile: 087 1035 355

Email:

info@cottageautismnetwork.com

1. COMMUNITY SUPPORTS



Down Syndrome Ireland Wexford

The Wexford branch of Down Syndrome Ireland supports local families by offering early-years groups, social events, and access to therapies such as speech and language therapy, occupational therapy, swimming, and horse riding. It also helps bring educational opportunities like the Latch-on programme to the county while providing respite supports and community-building events for children and adults.

Down Syndrome Ireland Wexford

Email info@wexford.downsyndrome.ie
downsyndrome.ie/branches/wexford/



1. COMMUNITY SUPPORTS



SOCIAL MEDIA SUPPORT GROUPS

DCA Warriors (Facebook Page)

DCA Warriors aim to improve the quality of life of families affected by disability by providing support and information to members. The group also supports those needing assistance with applications for financial supports (Disability Allowance, Carers Allowance/Benefit) and/or with special educational issues.

[DCA Warriors | Facebook](#)

Facebook



Autism and Special Needs Parents Support Group (Facebook Page)

This is a support group for parents, caregivers and caretakers who have children with autism and special needs. Members can share ideas, ask questions and get advice without being judged.

[Autism & Special Needs Parents Support Group | Facebook](#)

Facebook



@fussireland (Instagram Page)

This is an advocacy group founded by the parents of neurodiverse and disabled children—a place to learn and access information.

F.U.S.S Ireland

(managed by Rachel, Rebecca and Edwina) (@fussireland)

Instagram



Other supports

There are many charity and advocacy groups in Ireland that provide information and support to disabled children, as well as their parents and caregivers. More information about these organisations can be found here:



[National Supports - Charity / Advocacy | CHO7 Children's Disability Network Teams](#)

2. HEALTH SUPPORTS



REFERRAL PATHWAYS FOR PUBLIC HEALTH SUPPORTS



SUPPORT NEEDED



SUPPORT THAT SHOULD BE ACCESSED

*Parents/Guardians: Can refer to: Speech and Language Therapy (SLT) and Occupational Therapy (OT) but only if the child is already known to OT
Cannot refer to: Psychology, Physiotherapy, Dietetics

Teachers: Can refer to: SLT and OT
Cannot refer to: Psychology or Physiotherapy
GPs: Can refer to: All primary care services

2. HEALTH SUPPORTS



2.1 PRIMARY CARE

Primary Care is for children with non-complex needs that have mild to moderate impact on daily life. Their services are delivered by the HSE through Local Health Centres and General Practitioners or Family Doctors.

Public Health Nurse or School Age Nurse

► A **Public Health Nurse** can support children aged from birth to up to 5 years and 11 months, and can refer them to specialist disability services if needed. You can contact your Public Health Nurse to talk about any concerns.

To contact your Public Health Nurse, get in touch with your Primary Care Centres or Health Centres.

► A **School Age Nurse** supports children's health and wellbeing once they start school. They can provide advice on development, behaviour, and general health needs. If there are concerns about a child's learning, development, or possible disability, the School Age Nurse can make referrals to other health or support services.

To contact your School Age Nurse, get in touch with your Primary Care Centres or Health Centres. ([See Page 55](#))

Nappies

Children aged four and older who cannot toilet train can get an assessment and may receive continence care products (like nappies) from the HSE. For more information, contact your local Public Health Nurse or School Aged Nurse.

2. HEALTH SUPPORTS



General Practitioner / Family Doctor

Your family doctor can send you to other specialists, such as those in Primary Care Services or Children’s Disability Network Teams. If you’re worried about ADHD, anxiety, or other mental health issues, your family doctor can also refer you to the Child and Adolescent Mental Health Services.

You should book an appointment with your family doctor to talk about your concerns. You can use the HSE website to locate a family doctor closest to you:

[Find a GP in Ireland - HSE.ie](https://www.hse.ie/eng/health/11222.aspx)



This covers:

- Free family doctor visits
- Developmental checks at ages two and five
- Out-of-hours urgent family doctor care
- Care for children with asthma

After your child turns eight, you can apply for a medical card or pay privately for family doctor appointments.

Note: You can apply for a medical card without having a family doctor.

[Apply for a medical card](https://www.hse.ie/eng/health/11222.aspx)



2. HEALTH SUPPORTS



What are Primary Care Services from the HSE?

If your child's needs are non-complex and have a mild to moderate impact on their daily life, the following Primary Care services may be suitable.

Primary Care Services Referral Guidelines – Who Can Refer?

Parents/Guardians	Teachers	Family doctors
You can refer to Speech and Language Therapy and Occupational Therapy only if the child is already known to the Occupational Therapist	Can refer to Speech and Language Therapy and Occupational Therapy	Can refer to all primary care services

To be seen by Primary Care Services, complete the **Children's Services Referral Form** (see list of who can refer in the above table). Once completed, submit the form to your local Primary Care Centre.



Or if your child has complex needs that significantly affect their daily life, they may need to be supported by the Children's Disability Network Team.

Primary Care Services include a range of therapies such as:

Physiotherapy

Helps children improve movement and physical ability so they can take part in everyday activities.

Speech and Language Therapy

Speech and Language Therapists assess, diagnose, and support children with speech, language, and communication needs, as well as feeding and swallowing difficulties.

Occupational Therapy

Occupational Therapy helps children build everyday skills at home, school, and in the community. It supports areas like self-care, play, sensory processing and school tasks like writing and organisation.

2. HEALTH SUPPORTS



Dietetics

The Community Nutrition and Dietetic Service helps people understand how food affects their health. Dietitians are the only Community Nutrition and Dietetic Service-registered professionals trained to assess, diagnose, and treat nutrition and diet-related issues.

Dental Services

Primary Care Dental Services offer treatment to eligible children, medical card holders, adults with special needs, and those in HSE care. Children under 16 are seen in HSE dental clinics, while adults are treated by private dentists through the Dental Treatment Services Scheme.

Psychologist

Supports children with mild to moderate emotional or behavioural challenges, including issues with sleep, toileting, or eating.



2. HEALTH SUPPORTS



CHILDREN'S DISABILITY NETWORK TEAMS

What is the Children's Disability Network Team?

Children's Disability Network Teams address the needs of children with a wide range of complex needs arising from their disability such as intellectual disability, physical disability and autism.

Who is on the Children's Disability Network Team?

Children's Disability Network Teams typically include the following on their team: Occupational Therapists, Psychologists, Nurses, Physiotherapists (Physios), Social Workers, Dietitians and Speech and Language Therapists. Children's Disability Network Teams may also have access to other disciplines such as positive behaviour support specialists, early educators and therapy assistants.

What does the Children's Disability Network Team do?

Children's Disability Network Teams work within an interdisciplinary framework. This means that they work together and share information, decision-making, and goal-setting. They have common policies and procedures and frequent opportunities for communication. The Children's Disability Network Team works together with the child and family, to create an individual family support plan.

How can my child access the Children's Disability Network Team?

A child's access to a Children's Disability Network Team is based on the complexity of their needs. A diagnosis is not required to be referred to a Children's Disability Network Team. Further information is available on www.dublinandsoutheastcdnt.ie.

How can I apply for the Children's Disability Network Team?

Parents can apply directly to the Children's Disability Network Team, and do not need a referral from a doctor or other medical professional. You cannot be in receipt of services from the Children's Disability Network Team and Primary Care at the same time, both services will decide which is the most appropriate service to meet your child's needs.





2. HEALTH SUPPORTS

How to apply for the CDNT

Step 1

Complete the [Children's Services Referral Form](#)



Step 2

Fill out the **Additional Information Form** for your child's age group

- 0 to 11 months
- 1 to 2 years and 11 months
- 3 to 5 years and 11 months
- 6 to 11 years and 11 months
- 12 to 17 years and 11 months



Step 3

Send both forms to your local CDNT - use this link to find your local CDNT [Click Here](#)

Email: Wexford.cdnt@hse.ie



Tips for filling out children's services referral forms:

1. Ask another **caregiver, teacher, or support worker** who knows your child to help you fill out the form.
2. Use clear, **simple** examples to explain your **child's needs or challenges**.
3. Make a copy of the **completed form** or take **clear photos** before you send it.

2. HEALTH SUPPORTS



ASSESSMENT OF NEED

If you're unsure about your child's needs, you can apply for an Assessment of Need. Under the Disability Act 2005, an Assessment of Need identifies your child's health needs and outlines the services required to meet those needs. This is important because an Assessment of Need helps you understand your child's developmental or health needs early, ensuring they receive the right supports as soon as possible. It also gives you a formal pathway to access essential services under the Disability Act 2005, helping you advocate for the interventions your child is entitled to.

All children with disabilities in Ireland have the right to:

- An independent assessment of their health needs
- An assessment report
- A statement of the services they will receive
- Make a complaint if they are unhappy with any part of the process

How to apply for an Assessment of Need

Step 1

Complete the
Assessment of Need Application Form



Step 2

Send to:	Eircode: Y35 HH74
Wexford Regional AON Office	Phone: 053 911 4523
Larkin House, Larkin's Cross, Barntown, Co. Wexford	Email: aon.cho5@hse.ie

Apply for an Assessment of Need at the same time as you refer your child to Primary Care or your local Children's Disability Network Team. The Assessment of Need is a separate service from Primary Care or the Children's Disability Network Team, so don't wait for the Assessment of Need process to be completed before seeking other supports for your child.

2. HEALTH SUPPORTS



Before and During the Assessment

Once your application is received, you should get a **confirmation letter within two weeks**. Your **Assessment Officer** may contact you to ask for more information about your child, so they can better understand your child's needs.

If your child qualifies for an assessment: The assessment should **start within three months** of the HSE receiving your completed application. The assessment should then be **completed within a further three months**. At the end of the process, you will receive an **Assessment Report**. Sometimes delays can happen for medical or other exceptional reasons. If this happens, the Assessment Officer should **contact you**, explain the reason for the delay, and discuss what will happen next.

After Your Child's Assessment of Need

When the assessment is finished, the **Assessment Officer** writes a report about your child.

If the report says your child has a disability: The report is sent to a **Liaison Officer**. The Liaison Officer prepares a **Service Statement**, which explains what supports your child should get. You usually receive the **Assessment Report and Service Statement together**, within about **one month**.

If the report says your child does not have a disability: You will receive the **Assessment Report only**. A Service Statement will **not** be provided.

What the Assessment Report Tells You

- Whether your child has a disability.
- What kind of disability it is and how it affects your child.
- What health or learning supports your child needs.
- What services are recommended and when they should start.
- When the assessment should be reviewed again.

2. HEALTH SUPPORTS



If You Are Not Happy With the Outcome

If you are unhappy with **how the assessment was carried out**, contact the **Assessment Officer**.

If you are unhappy with the **supports listed in the Service Statement**, contact the **Liaison Officer**.

These should be your **first point of contact**.

- If the issue is not resolved, you can contact the **Disability Complaints Officer**.
- You can ask for a **complaint form** from the Assessment Officer or Liaison Officer.
- If you want to **appeal a decision**, you can contact the **Disability Appeals Officer**, who is independent from the HSE.

Disability Appeals Office	1800 211 583
----------------------------------	---------------------

2. HEALTH SUPPORTS



PRIVATE ASSESSMENTS

Accessing private assessments or supports for your child can be expensive, but it may help you get services more quickly than through the public system. **It is important to check that the person doing the assessment is properly registered.** The HSE can only accept assessments carried out by certain qualified professionals. Taking a moment to confirm this in advance can help avoid extra costs and delays later on.

Private Assessments

<p>Costs and insurance</p>	<p>Private assessments can cost between €450 and €2,000 or more.</p> <p>Many health insurance companies offer individual child policies starting from around €35 per month.</p> <p>These policies may allow you to claim back up to 75% of the cost of private therapies.</p> <p>You can also claim 20% tax relief on health expenses using your annual Income Tax return with Revenue.</p> <p>There may still be waiting lists for private services, but they are usually shorter than public ones.</p>
<p>Assessment options</p>	<p>You can ask for a screening instead of a full assessment.</p> <p>A screening is generally cheaper and can give useful recommendations, but it will not provide a formal diagnosis.</p>

2. HEALTH SUPPORTS



Finding a private clinic or specialist

To find private professionals in your area, you can:

- Search online. For example, google “private child assessment near me”.
- Ask other parents for recommendations.
- Join local or national Facebook groups for advice and experiences.
- Check with your health insurance provider they may have a list of approved paediatric clinics.
- Some clinics can provide a full, multidisciplinary assessment, meaning your child is seen by several professionals. For example, a Psychologist, Speech and Language Therapist, and Occupational Therapist.

Check Professional Registration

Before booking, always make sure the professional is registered with a recognised professional body in Ireland, such as:

CORU

– for health and social care professionals



PSI (Psychological Society of Ireland)

– for psychologists



IASLT (Irish Association of Speech & Language Therapists)

– for speech therapists



AOTI (Association of Occupational Therapists of Ireland)

– for occupational therapists



2. HEALTH SUPPORTS



What Happens After The Referral To A Health Professional?

Your child will be placed on a waiting list. Wait times vary across services.

When you are called for an appointment (and it may be some time), you will receive a letter inviting you to attend an appointment with an allocated health professional.

Each health professional your child will see may:

- Spend time with your child and observe your child in play
- Administer certain tests and tasks. For example, ask your child to point to pictures, do puzzles, play games with them, and so on)
- Ask you and/or other important people in your child's life, for example, a teacher, questions about your child's learning and development

Before your child is seen by a public health professional, you may be invited to attend a group programme for parents. For example, a parenting course, a course on supporting language development, and so on.

It is a good idea to prepare for an appointment by writing down why you are concerned and any observations you may have.



2. HEALTH SUPPORTS



RESPITE SUPPORT:

Respite is taking a break from caring while the person you care for is looked after by someone else. The following are useful websites.

Local Respite Supports:

Jack and Jill Children's Foundation



LauraLynn



Family Carers Ireland



Local Respite In Wexford Includes:

Ard Aoibhinn Services offer a supports for some people with intellectual disabilities and/or autism, including:



- Day and Residential services for adults
- Respite care for both children and adults
- A special preschool programme

They are funded by the HSE, so all referrals must go through your local HSE office.

The **Collective Sensory Group Wexford Town** offers respite services for adults and children. It was established by parents of children with additional needs and developmental delays who identified a need for greater service provision within their community.



3. EDUCATION SUPPORTS



ADDITIONAL EDUCATION SUPPORTS FOR CHILDREN WITH SPECIAL EDUCATIONAL NEEDS

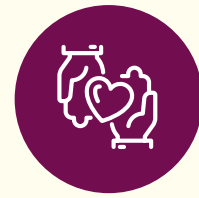
All children in Ireland have a right to an appropriate education, which can be inclusive in mainstream schools, special classes within mainstream schools, or special schools, depending on their needs.

Most children are educated in mainstream schools with **additional support**. Some children attend **special classes within mainstream schools**, which have lower teacher-pupil ratios and may allow for some inclusion in mainstream classes. Special schools are for children with more complex needs who would not thrive in a mainstream setting.

Parents can also ask the school or SENO about transition supports to help their child move smoothly from pre-school to primary and onto post-primary education.

Education Stage	Supports	Other Supports
Pre-school	<ul style="list-style-type: none"> • Access and Inclusion Model • Early Intervention Classes • Private autism-specific preschools 	<ul style="list-style-type: none"> • Home Tuition Grant
Primary School applications for entry to primary school (e.g. Junior Infants) on 1st October of the year before your child is due to start.	<ul style="list-style-type: none"> • Special Education Needs Organiser (SENO) • Special Schools/Classes 	<ul style="list-style-type: none"> • School Transport • Access to Special Needs Assistant (SNA) • Access to Special Education Teaching
Secondary School applications for entry to secondary school (e.g. First Year) on 1st October of the year before your child is due to start.	<ul style="list-style-type: none"> • Reasonable Accommodation at Certificate Examinations (RACE) • Disability Access Route to Education (DARE) • Higher Education Access Route (HEAR) 	<ul style="list-style-type: none"> • National Educational Psychological Service • Visiting Teacher Supports • TUSLA Education Support Services • Assistive Technology • Summer Provision • Dyslexia Association of Ireland Workshops

3. EDUCATION SUPPORTS



PRESCHOOL SUPPORTS

All children in Ireland are eligible for the **Early Childhood Care and Education (ECCE)** scheme and **National Childcare Scheme (NCS)**. These schemes provide free (ECCE) and/or subsidised (NCS) childcare places for children.

Wexford County Childcare Committee

Wexford County Childcare Committee offers information on childcare and preschool services in Wexford, including information on available financial support, community and private early years services.

Phone: 053 923 7156

Website: wexfordchildcare.ie



Access and Inclusion Model in Early Childhood Care and Education

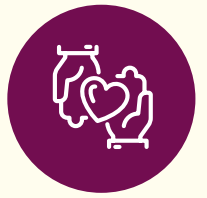
Your child's preschool service provider can apply for targeted supports under this model, for example, additional assistance in the preschool room, specialised equipment or minor alterations, and/or therapeutic supports.

Any equipment that children receive through the Access and Inclusion Model will transfer to school with them. Children with additional needs can apply for one extra year in preschool if they are not ready for school. They can also apply for an over-age exception to continue their preschool education. Access and Inclusion Model's supports will also be provided during this additional year. Some children may also access autistic-specific Early Years education outside of the ECCE scheme, if recommended on the child's report.

There are two main types:

1. Early Intervention Classes. These are usually located within or attached to a national school.
2. Private autism-specific preschools.

3. EDUCATION SUPPORTS



These are usually funded through the Home Tuition Grant. Places in these preschools will only be funded for those children who cannot access a suitable place in an Early Intervention class.

AIMS website: For Parents - Access and Inclusion Model



Home Tuition

The Home Tuition Grant is available to Autistic children aged between 2.5 and 5 years who cannot find an appropriate early intervention placement within the State education system.

The Department of Education will sanction Home Tuition for children if a parent can't find a suitable place for the child. A suitable place is where the child can get early intervention from a sanctioned organisation such as a specialist autism preschool who have a direct payment agreement with the Department of Education. Alternatively, from a suitably qualified teacher or tutor who can work with the child in their own home.

Children with a diagnosis of autism can access ten hours of home tuition per week from age 2.5, and from age 3, a place in Early Intervention Class or 20 hours of home tuition until school entry. Diagnosed Autistic children who attend a local ECCE preschool can also avail of 5 hours home tuition a week. Fifteen preschool hours (plus 5 hours Home Tuition) equals the 20 hours that Autistic preschool children are entitled to.

PRIMARY SCHOOL

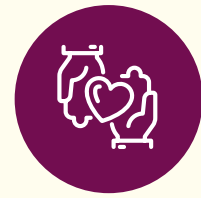
Primary schools begin accepting applications for entry to primary school (e.g. Junior Infants) on 1 October of the year before your child is due to start.



The Special Education Needs Organiser

The National Council for Special Education offers support for parents through its network of Special Educational Needs Organisers within designated geographical

3. EDUCATION SUPPORTS



areas. Each Special Educational Needs Organiser has responsibility for specific schools, primary, post-primary and special, within their area. In general, the role of the Special Educational Needs Organiser ensures that a child with special educational needs receives the support they are entitled to.

Special Schools/Classes

Contact your local Special Educational Needs Organiser to enquire about a place in a special school and/or special class. This includes autism classes located in a mainstream school. ASD classes often have very limited places, so schools may also require:

- A professional report confirming an ASD diagnosis
- Evidence that the child meets the criteria for the class (e.g., need for a specialist setting)

For the most up-to-date list of special schools and special classes in mainstream schools in Wexford, visit the National Council for Special Education (NCSE) website. You'll find this information under the "Special Classes" section.

Special Classes – National Council for Special Education –
Working to deliver a better special education service



School Transport

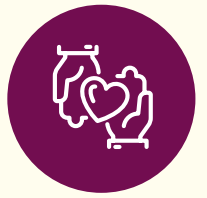
If your child has a disability and attends a special class or special school the Special Educational Needs Organiser can apply for transport arrangements for your child, including bus escorts and safety harnesses. Please discuss with your child's school for more information.



Access to Special Needs Assistant (SNA)

SNA stands for Special Needs Assistant. They play an important role in assisting the teacher to support students with special educational needs who have significant care needs. Your child's school allocates access to Special Needs Assistants. If required, this should be discussed with your child's Principal.

3. EDUCATION SUPPORTS



Access to Special Education Teaching

This is allocated by your child's school, based on data gathered by the school and school protocols for deployment of staff, in line with the Department of Education's Special Education Teaching guidelines. Please discuss this with your child's school.

National Educational Psychological Service

Access to the NEPS service is allocated by your child's school. You can discuss this with your child's school.

Visiting Teacher Supports for Preschool, Primary and Post-primary School

The National Council for Special Education's Visiting Teachers for Deaf/Hearing Impaired, Blind/Vision Impaired Support teachers in supporting the learning of children with sensory impairments are available across all educational levels, from preschool to and including post-primary.

Visiting teachers are qualified teachers with skills and knowledge of the development and education of children with varying degrees of hearing loss and/or visual impairment. They offer support to children, from 0-18 years. Each visiting teacher is responsible for a particular region and is allocated a caseload of students. Each referral should be made on the standard referral form and must be accompanied by an up-to-date audiology or ophthalmology report, as appropriate.

TUSLA Education Support Services

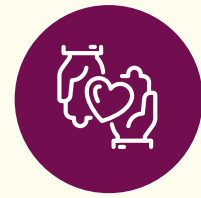
TUSLA Education Support Services Education Welfare Officers work with young people and their families who are experiencing difficulty with school attendance.

Contact Admin Support:

Phone: 059 912 9503

Email: tess.se@tusla.ie

3. EDUCATION SUPPORTS



Assistive Technology

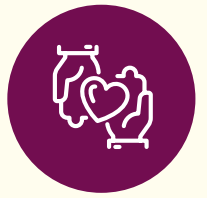
Where complex needs are evident, your school can apply for assistive technology equipment for your child to use at school. For example, laptops, iPads, and audiology equipment. Applications for assistive technology must be based on a professional recommendation. Please ask your child's school for more information.

Summer Provision

This is funding for parents/guardians to engage a teacher/Special Needs Assistant to provide tuition or care support as appropriate in the child's home during the summer. All students in special schools and special classes in primary and post-primary schools are eligible. Some students in mainstream schools with special educational needs are also eligible. Parents must source the teacher/Special Needs Assistant themselves. Please discuss with your child's school for more information.



3. EDUCATION SUPPORTS



Dyslexia Association of Ireland Workshops

The Dyslexia Association of Ireland offers weekly workshops for children with dyslexia. It involves small group tuition that is specifically designed to develop their literacy skills and self-confidence in a friendly and supportive environment.

Workshop Locations

[Dyslexia Ireland](#)



SECONDARY SCHOOL

Most secondary schools open their application window around 1 October of the year before your child starts.



You will usually need recent professional reports showing your child meets the criteria for an ASD class. Similar supports are available at secondary level, including special classes, learning support, SNA support, and access to support, depending on your child's needs.

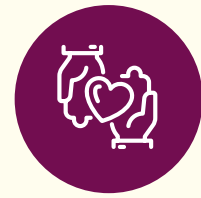
Places are limited, so early application and communication with the SENO are important.

State Examination and Third Level Supports

Reasonable Accommodation at Certificate Examinations scheme. Under this scheme, post-primary students with disabilities may receive special arrangements while sitting state examinations. For example, assistive technology, access to a scribe, an exemption from the aural part of the exam, and so on. In school, testing is used to determine eligibility for Reasonable Accommodation at Certificate Examinations, in line with the State Exams Commission protocols. Please discuss with your child's School Principal and/or Special Education Needs Coordinator.



3. EDUCATION SUPPORTS



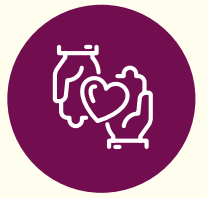
Disability Access Route to Education

Disability Access Route to Education is a third level alternative admissions scheme. Disability Access Route to Education can sometimes offer reduced points places to school leavers who, because of disability, have experienced additional educational challenges in second level education. The Disability Access Route to Education is for school leavers with a disability aged 23 or under. School leavers with physical and sensory disabilities (hearing and/or vision impairment) are prioritised under the Disability Access Route to Education scheme. Please discuss the eligibility criteria with your child's School Principal and/or Special Educational Needs Organiser Coordinator.

The Higher Education Access Route

The Higher Education Access Route is a third level alternative admissions scheme which offers places on reduced points and extra college support to school leavers who are resident in the Republic of Ireland, and are under-represented at Higher Education due to their socio-economic circumstances. The Higher Education Access Route is for school leavers aged 23 or under. An applicant who is eligible for this scheme will be given priority when allocating reduced points places. An applicant who is eligible for the Disability Access Route to Education and the Higher Education Access Route will be given priority when allocating reduced points places. Applications for both schemes are made through the Central Applications Office (CAO).

3. EDUCATION SUPPORTS



ALTERNATIVE EDUCATION

National Learning Network

The National Learning Network provides education, training, and development opportunities for people with disabilities or people requiring additional supports. They provide free training and specialised support to individuals who, for various reasons, may need assistance entering the job market. The National Learning Network is especially attuned to the needs of those who find traditional post-school study routes challenging, including individuals who may struggle in larger class settings or require additional support.

Phone: 053 914 7279
Wexford Town NLP



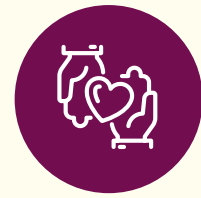
School Leavers Ability Project

The School Leavers Ability Project is an initiative aimed at persons aged 16-29. It is an individualised service that supports each person to make choices about their future education or employment options.

Email: info@schoolleaversap.ie



3. EDUCATION SUPPORTS



HIGHER EDUCATION SUPPORTS

Association for Higher Education Access and Disability

The Association for Higher Education Access and Disability is an independent, not-for-profit organisation that works to promote information about, and access to disability services for students involved in higher education.

www.ahead.ie



Third Level Disability/Access Officer:

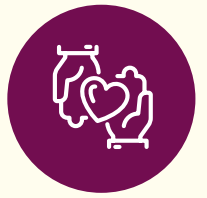
All universities and colleges have someone responsible for supporting students with disabilities. They are usually called a Disability or Access Officer. The disability or access officer will be your go-to person at the college for any concerns about your disability and education. Every college is different, so it's a good idea to have a conversation with them and find out exactly what supports are available so that you can make the most of your time there.

The Students' Union may also advise on any clubs or societies for students with disabilities. Your college can make a claim on your behalf to the Fund for Students with Disabilities to fund services and supports for you. Students with disabilities are eligible for third-level student grants on the same basis as other students. If you have been getting a social welfare payment, you may qualify for a Back to Education Allowance.

The Students' Union may also advise on any clubs or societies for students with disabilities. Your college can make a claim on your behalf to the Fund for Students with Disabilities to fund services and supports for you. Students with disabilities are eligible for third-level student grants on the same basis as other students. If you have been getting a social welfare payment, you may qualify for a Back to Education Allowance.

SETU (South East Technological University) is committed to making sure students with disabilities have equal access to college life and learning.

3. EDUCATION SUPPORTS



If your child has a disability, here's how they can get support:

- 1. Register with the Disability Office:** Each campus has its own Disability Office. Students should contact their campus office to register and access supports.
- 2. Needs Assessment:** Once registered, the student will have a one-to-one meeting to identify the supports they need. This is based on the documents they provide, such as medical or educational reports.
- 3. Supports Available:** These may include assistive technology, learning support, and exam accommodations.
- 4. Disability Access Route to Education Applicants:** Even if your child was accepted through the Reasonable Accommodation at Certificate Examinations scheme, they still need to register with the Disability Office and complete a Needs Assessment.

For more information: [South East Technological University | DARE](#)

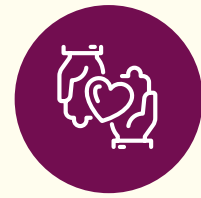


Further Education and Training courses can also be accessed through the Waterford and Wexford Education and Training Board. To find out about disability supports, the link to the Education and Training Board website Learner Supports is Learner Support Service - Waterford and Wexford Education and Training Board.

[Waterford and Wexford Education and Training Board](#)



3. EDUCATION SUPPORTS



Pathways to Employment

If you have a disability, there are supports to help you find and keep a job. The Employability Employment Programme aims at reducing and removing barriers disabled people may face at work.

Employability Enniscorthy, Wexford:

Employability aims to source employment for people aged between 18 and 66 with a disability, mental health difficulties, injury or illness and support them into full or part-time sustainable employment, provide information and support to employers, in the open labour market, to facilitate this outcome and to promote social inclusion within the community

Phone: 053 924 3930

[Employability Wexford](#)



WorkAbility, Wexford

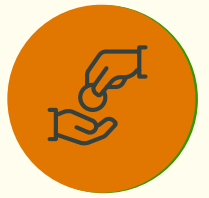
Pathways to Employment for young people in Wexford from the age of 16. This service aims to support people to break barriers, unleash their potential and create a future filled with opportunity.

Phone: 053 915 5800

wld.ie



4. FINANCIAL SUPPORTS



If you're parenting a disabled child, you may be able to access financial support through several government schemes. These include:

- **Domiciliary Care Allowance:** for children under 16 with a severe disability.
- **Carer's Allowance and Carer's Benefit:** if you're providing full-time care.
- **Tax credits and reliefs:** which may help reduce your overall tax bill.

These supports can ease some of the financial pressure and help you focus on your child's needs.

Domiciliary Care Allowance

A monthly payment for parents of children who require substantial care, over and above the care that would usually be required by children of the same age. You can apply for it without your child having a diagnosis, for example, while waiting for a diagnosis. The Domiciliary Care Allowance is not means-tested. This means that you can receive both Carer's Allowance and Domiciliary Care Allowance payments.

More information: [MyWelfare, Department of Social Protection](#)

This allowance will be paid until the child turns 16 years old. At 16, the young adult can apply for the Disability Allowance.



Children in receipt of the Domiciliary Care Allowance are automatically entitled to a non-means-tested medical card.

More information: [Medical card for Domiciliary Care Allowance](#)

Join the Domiciliary Care Allowance Warriors Facebook Group Facebook @DCAWarriors



4. FINANCIAL SUPPORTS



Carer's Allowance

The Carer's Allowance is a weekly payment to people on low incomes who care for a person who needs support because of age, disability, or illness. Carer's Allowance is means-tested. Parents/Carers can work up to 18.5 hours per week and still be eligible for this allowance.



More information: [Carer's Allowance Application Form \(CR1\)](#)

Disability Allowance

The Disability Allowance is a weekly allowance paid to people with a disability. You can get Disability Allowance from 16 years of age. You can get Disability Allowance even if you are in school.



More information: [Disability Allowance Application Form \(DA1\)](#)

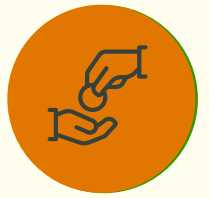
Medical Card

A Medical Card is issued by the HSE and allows the cardholder certain health benefits for free. To be awarded a Medical Card, a parent needs to pass a means-tested assessment. However, if a child receives Domiciliary Care Allowance or Disability Allowance, your child may be awarded a Medical Card irrespective of the parents' income. This is sometimes called a discretionary Medical Card and carries all the same benefits as a means-tested Medical Card.



More information: [Medical Card Application Form](#)

4. FINANCIAL SUPPORTS



Long Term Illness Scheme

If you have a medical condition covered by the Long-Term Illness Scheme, you can get free drugs, medicines and medical and surgical appliances for the treatment of that condition.



More information: [Long Term Illness Form](#)

Carer's Benefit

This is a weekly payment to people who leave work to care for a person who needs full time care. You must have paid sufficient PRSI contributions from your employment to receive this benefit. You can get the Carer's Benefit for a total of 104 weeks for each person being cared for. Carer's Benefit is not means-tested.



More information: [Carer's Benefit Application Form \(CARB1\)](#)

Carer's Support Grant

This is paid once a year in June. This is awarded automatically if you receive a Domiciliary Care Allowance, Carer's Allowance or Carer's Benefit



More information: [Carer's Support Grant](#)

Carers General Practitioners (family doctor) Visit Card

If you get Carer's Benefit or Carers Allowance, at full or half rate, you can visit your family doctor for free.



More information: [Carer's GP visit card](#)

4. FINANCIAL SUPPORTS



INCOME TAX CREDITS AND RELIEFS

Incapacitated Child Tax Credit

The Incapacitated Child Tax Credit is available to the parent or guardian of a child who is permanently incapacitated, either physically or mentally, and where there is a reasonable expectation that the child will be unable to maintain themselves when over 18. More information: Carer's Benefit Application Form (CARB1)



More information: [Incapacitated Child Tax Credit](#)

Dependent Relative Tax Credit

You may claim this credit if you maintain a relative at your own expense. This means meeting the cost of everyday living.



More information: [Dependant Relative Tax Credit](#)

Home Carer Tax Credit

Tax credit for married couples or civil partners where one spouse or civil partner works in the home caring for a dependent person.



More information: [Home Carer Tax Credit](#)

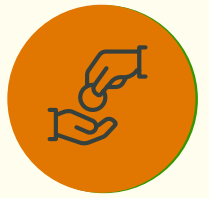
Vat Reliefs Available for Persons with Disabilities

You can claim VAT refunds on aids and appliances, including ICT equipment purchased to manage disability, for example, an iPad. You can claim a range of tax reliefs in connection with the purchase or use of motor vehicles under the Disabled Drivers and Passengers with Disabilities Tax Relief Scheme.



How to reclaim VAT on aids and appliances for persons with disabilities

4. FINANCIAL SUPPORTS



Other

If you are in receipt of Carer's Allowance and/or other disability related payments, you are also entitled to other financial supports including Household Benefits Package, Free Travel Pass and/or Medical Card that gives you access to medical services, prescription medicines and hospital care for free.

Housing Adaptation Grant

This is financial assistance to make changes or adaptations to your home. For example, making it wheelchair accessible, adding a ground-floor bathroom.



More information: [Disabled People - Housing Adaptation Grant | Wexford County Council](#)

Fully Funded Energy Upgrades

If you are in receipt of one of the following welfare payments: Domiciliary Care Allowance, Carers Allowance (and live with the person you are caring for), or Disability Allowance (for over six months and have a child under seven years of age), and own and live in your own home which was built before 2006, you will meet the three criteria to apply for the Fully Funded Energy Upgrade Scheme.



More information: [Fully Funded Energy Upgrades | Home Energy Grants | SEAI](#)

Future Planning

See www.financialwellbeing.ie for advice on financial planning for the future of a child with disabilities, including establishing a trust.



More information: www.financialwellbeing.ie

4. FINANCIAL SUPPORTS



Community Welfare Officers (Intreo)

Community Welfare Officers are responsible for the day-to-day running of the Supplementary Welfare Allowance Scheme including Additional Needs Payments and Disability Allowance.



To make an appointment with a community welfare officer, visit your local Intreo Centre. You can access **Community Welfare Services** in Wexford by contacting:

Phone: 0818 607 080
Email: CWSWexford@welfare.ie

Children's Rights and Making a Complaint

For information on the rights of the child, visit:

www.oco.ie

www.childrensrights.ie



HSE

The HSE Your Service Your Say can facilitate your feedback or complaints about HSE services.

Phone: 1800424555
Email: yoursay@hse.ie



5. SOCIAL ACTIVITIES FOR CHILDREN



Social activities help children build friendships, confidence, communication skills, and emotional well-being. All of these are essential for their overall development and long-term wellbeing of ALL children. Before setting out on a new social activity for your child here are a few tips

Choose the Right Activity

Pick something that matches your child's interests, abilities, and energy levels. Think about sensory needs, physical access, and whether the environment feels safe and welcoming.

Gather Information

Find out what the activity involves, such as its location, noise levels, group size, facilities, and staff experience with disability. Contact the activity organiser and ask questions about the activity.

Prepare Your Child

Talk to them about what to expect. Use pictures, videos, or stories to help them visualise the activity. You could ask to do a practice run or visit the space beforehand with the organiser.

Plan for Comfort and Support

Bring anything that helps your child feel secure, such as a favourite item, noise-cancelling headphones, snacks, or a visual schedule. Let staff know about any specific needs.

Start Small

Begin with short sessions or quiet times. Let your child take breaks or observe before joining in fully.

Reflect Together

Afterwards, chat about what they liked or didn't like. Use their feedback to guide future choices.

Build Routine if It Works

If your child enjoys the activity, consider making it part of their weekly routine. Familiarity can build confidence and enjoyment.

5. SOCIAL ACTIVITIES FOR CHILDREN



WEXFORD LIBRARIES

Wexford Libraries offers digital and physical access to children and families through their network of five branch libraries, two mobile libraries and library management services. Resources include assistive computer hardware and technology, IRIS and a portable loop system, magnifier readers, homebound service, sensory toys and assistive resources as well as Read Along Story Sessions and other activities.

Wexford libraries also hold the Sensory Toys and Assistive Resources (STAR) collection. The Sensory Toys and Assistive Resources collection holds over 100 items and was developed to support children and young people with additional needs. Items such as toys, special aids and literacy apps can be borrowed from all libraries in County Wexford. Items have been chosen to aid various skills such as fine motor skills or sensory processing development.

This collection was carefully developed in collaboration with therapists and can be accessed free of charge in all library branches throughout County Wexford.

Branches located in:

Wexford Town Library Mallin St., Wexford

Eircode: Y35 AY20

Gorey Library Gorey Civic Sq., The Avenue, Gorey, Co. Wexford

Eircode: Y25 WK37

Enniscorthy Library Lymington Road, Enniscorthy, Co. Wexford

Eircode: Y21 AD92

Bunclody Library Millwood, Carrigduff, Bunclody, Co. Wexford

Eircode: Y21 E970

New Ross Library Barrack Lane, New Ross, Co. Wexford

Eircode: Y34 NW56



5. SOCIAL ACTIVITIES FOR CHILDREN



Ferns Diocesan Youth Service

Ferns Diocesan Youth Service (FDYS) is the local voluntary youth service in County Wexford. They have multiple locations:

- Wexford
- Enniscorthy
- Gorey
- Bunclody

Ferns Diocesan Youth Service services include a youth café, counselling, youth groups, LGBT support and clubs.

Contact details:

Phone: 053 91 23262
Mobile: 085 881 4259
fdys.ie



Youth New Ross

Youth New Ross runs a variety of activities for young people, including groups and one-to-one work. They work with young people aged 10-24 years.

Contact details:

Phone: 051425415
Email: info@ynr.ie
youthnewross.com



5. SOCIAL ACTIVITIES FOR CHILDREN



Friends Together New Ross

Friends Together New Ross (FDYS) is a youth club for children with additional needs (age 8-18 years).

Contact details:

Mobile: 089 616 6951

Social: www.facebook.com/friendstogetherNRYC



Special Olympics

Special Olympics Ireland has several sports clubs across the county. This includes:

Contact details:

- Athletics
- Gymnastics
- Swimming
- Basketball
- Football
- Table tennis

specialolympics.ie



Details and contacts for each club can be found on the website here:

[Find a Club | Special Olympics Ireland](#)

Gorey Youth Needs Group

Contact Mandi Tighe or Karen McCann for details.

Email: mandi.tighe@gyng.ie

Email: karen.mccann@gyng.ie

gyng.ie



5. SOCIAL ACTIVITIES FOR CHILDREN



Wexford GAA VIP Inclusion Programme

Contact details:

Phone: 053 9144808

Email: administrator.wexford@gaa.ie
wexfordgaa.ie



Sports Active Wexford, Local Sports Partnership

Sports Active Wexford, Local Sports Partnership offer a variety of inclusive activities for children and adults with disabilities including:

- Cricket for All
- Inclusive Swimming
- Woodlands for Health
- Inclusive Tag Rugby
- Learn to Cycle
- Enjoy Tennis
- Football for All
- Visions Sports (VI Tennis Rosslare)
- Inclusive Fitness
- Walking Rugby

(Anna Flynn - Sports Inclusion Development Officer)

Email: anna.flynn@wexfordcoco.ie
wexfordcoco.ie



5. SOCIAL ACTIVITIES FOR CHILDREN



Rag Tree Equine Assisted Learning

Ballynamona, Kilmuckridge, Gorey, Co. Wexford
Therapeutic horse riding

- Recreational horse riding
- Equine assisted learning
- Horsemanship programme
- Summer camps

Contact details:

Phone: 087 4425115
Email: info@ragtree.ie
ragtree.ie



Happy Trails Therapeutic Riding School

Davidstown Lane, Davidstown, Enniscorthy, Co. Wexford

Eircode: Y21 HY48
Phone: 085 118 8068

Judo Assist Gorey

Judo Assist Gorey is open to all kids with additional needs and their siblings.

Contact details:

Phone: 086 1734031 (Sean Davitt)
specialneedsjudo.com



5. SOCIAL ACTIVITIES FOR CHILDREN



Railway Yard Horse Riding

Railway Yard Horse Riding, Millbrook,
Duncormick, Co. Wexford

Phone: 087 2247413

www.railwayyard.ie



Aspire Gymnastics Academy

GymAble classes for children with additional needs.

Coolree, County Wexford

Phone: 087 1433446

aspiregymnastics.ie



New Ross Play Barn

New Ross Play Barn runs sensory soft play hours for children with additional needs.

New Ross Play Barn, Irishtown,
New Ross, Co. Wexford

Phone: 051 420295

Football Association of Ireland (FAI) Football for All

Wexford FC participates in the Football Association of Ireland Football for All programme. This programme's central aim is to provide football opportunities to people who may not ordinarily have the chance to play the 'beautiful game'. This includes:

- Down Syndrome Legends team
- Powerchair Football team

For further information, relevant club contacts can be contacted here:

wexfordfc.ie/club-contacts/



5. SOCIAL ACTIVITIES FOR CHILDREN



Rainbow Youth Club

Youth service for children 8 to 18 with additional needs which is run as part of the Dream Big Foundation.

Rainbow Youth Club, New Ross, Co. Wexford

Phone: 087 7486842

Email: dreambigfoundation22@gmail.com

Phoenix Rising Youth Club

Youth Club for children with additional needs in Enniscorthy.

Phoenix Rising Youth Club, Enniscorthy, Co. Wexford

Email: phoenixrisingenniscorthy@gmail.com

Lioness Aerial Fitness

Offer inclusive aerial fitness classes in association with Downs Syndrome Ireland.



Lioness Aerial Fitness Wexford, Studio 2, Drinagh Fitness Studios, Co. Wexford.

Phone: 085 7149705

lionessaerialfitness.ie

LeisureMax

Offers sensory mornings in the soft play areas and bouncy castles from 9:30 am 11:30 am on the last Sunday of each month.



Sinnottstown Lane, Drinagh, Co. Wexford

Phone: 053 9122900

leisuremax.ie

5. SOCIAL ACTIVITIES FOR CHILDREN



Imaginative sessions

Imaginative LEGO-based sessions designed to support creativity, social interaction and developmental skills through play. Open to children of all abilities for after school clubs, community groups and one off workshops.

Locations: New Ross, Wexford Town, Enniscorthy, Bunclody

Mobile: 087 4188902 Mag

Mobile: 086 6005985 Jill



6. FAQs

Health Supports

How do I access health supports for my child?

The pathway depends on your child's needs:

- **General support:** Contact your local health centre, GP, or Public Health Nurse
- **Not feeling well/mental health concerns:** Visit your GP who can refer to appropriate services
- **Needs with some impact on daily life:** Fill out a Children's Services Referral Form for Primary Care Services
- **Complex needs:** Complete both the Children's Services Referral Form and Additional Information Form for CDNT
- **Unsure what support is needed:** Complete an Assessment of Need Application Form and

What is the GP Visit Card for children?

All children under 8 living in Ireland are entitled to a GP visit card covering:

- Free GP visits
- Developmental checks at ages 2 and 5
- Out-of-hours urgent GP care
- Care for children with asthma

After age 8, apply for a medical card or pay privately.

What is the difference between Primary Care Services and CDNT?

Primary Care Services are for children with non-complex needs that have mild to moderate impact on daily life. Services include physiotherapy, speech and language therapy, occupational therapy, dietetics, dental services, and psychology.

6. FAQS

Children’s Disability Network Teams (CDNT) address complex needs arising from intellectual disability, physical disability, and autism. They provide interdisciplinary support and create individual family support plans.

Important: You cannot receive services from both at the same time.

Who can refer my child to Primary Care Services?

- **Parents/Guardians:** Can refer to Speech and Language Therapy and Occupational Therapy (only if child is already known to OT)
- **Teachers:** Can refer to Speech and Language Therapy and Occupational Therapy
- **GPs:** Can refer to all primary care services

Parents cannot directly refer to Psychology, Physiotherapy, or Dietetics.

Do I need a diagnosis to access CDNT?

No, a diagnosis is not required to be referred to a Children’s Disability Network Team. Access is based on the complexity of your child’s needs.

What is an Assessment of Need?

Under the Disability Act 2005, an Assessment of Need identifies your child’s health needs and outlines required services. All children with disabilities have the right to:

- An independent assessment of their health needs
- An assessment report
- A statement of services they will receive
- Make a complaint if unhappy with the process

You can apply directly without a GP referral.

6. FAQs

How long does an Assessment of Need take?

Once your application is received, you'll get confirmation within two weeks. If your child qualifies, the Assessment Officer will arrange it within three months. The assessment itself must be completed within a further three months.

Should I wait for Assessment of Need results before seeking other supports?

No. The Assessment of Need is a separate service from Primary Care or CDNT. Don't wait for the process to be completed before seeking other supports for your child.

What about private assessments?

Private assessments cost between €450 and €2,000+. Health insurance may cover up to 75% of costs. You can claim 20% tax relief on health expenses through Revenue. Always check that professionals are properly registered with CORU, PSI, IASLT, or AOTI before proceeding.

Education Supports

What preschool supports are available?

All children are eligible for the **Early Childhood Care and Education (ECCE)** scheme and **National Childcare Scheme (NCS)**.

The Access and Inclusion Model (AIM) provides targeted supports including additional assistance, specialized equipment, or therapeutic supports. Children can apply for one extra year in preschool if not ready for school.

6. FAQs

What is Home Tuition?

The Home Tuition Grant is available to autistic children aged 2.5-5 years who cannot find an appropriate early intervention placement. Autistic children can access:

- 10 hours per week from age 2.5
- From age 3: either a place in Early Intervention Class OR 20 hours of home tuition

If attending ECCE preschool: 5 hours home tuition per week

What school supports are available?

- **Special Schools/Classes:** Contact your Special Educational Needs Organiser
- **Special Needs Assistant (SNA):** Allocated by your child's school
- **Special Education Teaching:** Allocated based on school data and protocols
- **Assistive Technology:** Schools can apply for equipment like laptops, iPads
- **School Transport:** Available for children with disabilities attending special classes/schools
- **Summer Provision:** Funding for home tuition or care support during summer

Who is the Special Educational Needs Organiser (SENO)?

The SENO ensures children with special educational needs receive entitled support. They have responsibility for specific schools within designated areas and can help with placement in special schools/classes and school transport arrangements.

What supports exist for state examinations?

The **Reasonable Accommodation at Certificate Examinations (RACE)** scheme provides special arrangements like assistive technology, scribes, or exemptions from exam sections. Schools determine eligibility through testing.

6. FAQs

What are DARE and HEAR?

DARE (Disability Access Route to Education): Alternative admissions scheme offering reduced points to school leavers (aged 23 or under) whose disability created educational challenges. Prioritizes physical and sensory disabilities.

HEAR (Higher Education Access Route): Offers reduced points and support to school leavers under-represented in higher education due to socio-economic circumstances.

Applications made through the Central Applications Office (CAO).

What happens when my child turns 18?

Adult day services are HSE-funded programmes for people 18+ with intellectual disabilities, autism, or complex physical disabilities. Referrals should be made to your local Day Service Opportunity Officer.

Financial Supports

What is Domiciliary Care Allowance?

A monthly payment for parents of children under 16 requiring substantial care beyond what's typical for their age. You can apply without a diagnosis. It's not means-tested, and children receiving it automatically get a non-means-tested medical card.

When the child turns 16, they can apply for Disability Allowance.

What is Carer's Allowance?

A weekly means-tested payment for people on low incomes caring for someone needing support. Parents/carers can work up to 18.5 hours per week and remain eligible.

6. FAQs

What's the difference between Carer's Allowance and Carer's Benefit?

Carer's Allowance: Means-tested weekly payment for those on low incomes

Carer's Benefit: Not means-tested; requires sufficient PRSI contributions. Can be received for up to 104 weeks for each person cared for.

Can I receive both Domiciliary Care Allowance and Carer's Allowance?

Yes. Domiciliary Care Allowance is not means-tested, so you can receive both payments.

What tax credits are available?

- **Incapacitated Child Tax Credit:** For parents of permanently incapacitated children
- **Dependent Relative Tax Credit:** If you maintain a relative at your expense
- **Home Carer Tax Credit:** For married couples/civil partners where one cares for a dependent person
- **VAT Relief:** On aids, appliances, and ICT equipment purchased to manage disability

Community Supports

What are Family Resource Centres?

Community hubs offering support to families, including:

- Inclusive activities (playgroups, youth clubs, events)
- Practical one-to-one support and social groups
- Information on applying for supports
- Parent support groups and workshops
- Connections to local disability services

No referral needed - just contact your local centre.

6. FAQs

Are there parent support programmes?

Yes, including Incredible Years Programme and Parents Plus Programmes. Some are specific for families with children with additional needs, like Parents Plus Special Needs Programme and Parents Plus for ADHD.

Check the Wexford Parents Hub for upcoming talks and programmes.

What social activities are available?

Activities include:

- **Wexford Libraries:** STAR collection of sensory toys and assistive resources
- **Youth services:** Ferns Diocesan Youth Service, Youth New Ross
- **Sports:** Special Olympics, inclusive swimming, cricket, GAA VIP, Sports Active Wexford
- **Horse riding:** Rag Tree, Happy Trails, Railway Yard
- **Other:** Judo Assist, gymnastics, football, youth clubs, aerial fitness, soft play sessions



LIST OF LOCAL HEALTH OFFICES IN WEXFORD:

Adamstown
Phone: 053 924 06 23

Ballagh, The
Phone: 053 913 64 11

Ballindaggin
Phone: 053 938 88 08

Blackwater
Phone: 053 912 72 55

Bree
Phone: 053 924 78 81

Bridgetown
Phone: 053 913 51 42

Bunclody
Phone: 053 937 72 85

Camolin
Phone: 053 938 31 13

Campile
Phone: 051 388 821

Clonegal
Phone: 053 937 73 69

Clonroche
Phone: 053 924 42 13

Enniscorthy
Phone: 053 923 34 65

Ferns
Phone: 053 936 64 00

Gorey
Phone: 053 942 13 74

George's Street
Phone: 053 912 35 22

Grogan's Road
Phone: 053 912 35 22

Killenagh
Phone: 053 942 71 54

New Ross Health Centre
Phone: 051 440 200

Oylgate
Phone: 053 913 86 02

Rosslare
Phone: 053 913 33 14

Taghmon, Main Street
Phone: 053 913 44 92



Enniscorthy Children's Disability Network Team

St. John's Community Hospital Grounds, Munster Hill, Enniscorthy, Wexford.

Eircode: Y21 H4CF

Phone: 053 925 9801

Wexford Children's Disability Network Team

Larkin House, Larkins Cross, Ballyhine, Barnstown, Wexford.

Eircode: Y35 HH74

Phone: 053 911 4500

New Ross Children's Disability Network Team

New Ross Health Centre, Hospital Grounds, New Ross, Wexford

Eircode: Y34 WY18

Phone: 053 911 4338

Gorey Children's Disability Network Team

The Avenue Primary Care Centre, The Palms, Gorey, Wexford,

Eircode: Y25 C7Y3

Phone: 053 948 9145

HEALTH SUPPORTS CONTACTS



PRIMARY CARE:

Enniscorthy Primary Care Centre

Quarry Park, Blackstoops, Enniscorthy, Co. Wexford.

Eircode: Y21 T8W7

Phone: 053 923 1700

Wexford Primary Care Centre

Grogan's Road, Townparks, Wexford Town, Wexford.

Eircode: Y35 DA39

Phone: 053 911 4201

Wexford Primary Care Centre

Grogan's Road, Townparks, Wexford Town, Wexford

Eircode: Y35 DA39

Phone: 053 911 4201

Conal House Primary Care Centre,

St Michael's Road, Gorey, Wexford.

Eircode: Y25 K2N0

Phone: 053 942 1303



Children and Young People’s Services Committees (CYPSC) are a key structure identified by Government to plan and co-ordinate services for children and young people in every county in Ireland. The overall purpose is to improve outcomes for children and young people through local and national interagency working.

Wexford Children and Young People’s Services Committee was established in 2014. It brings together a wide range of statutory and voluntary organisations who work together to enhance the lives of children and young people in Co. Wexford.

During consultations for the recent “Wexford Children and Young People’s Plan 2025-2027”, the need for clear information about disability services and supports for children and young people was highlighted.

A group of stakeholders came together and formed the Disability Pathways Task Group. Together, they guided and supported the development of this resource. The Disability Pathways Task Group would like to acknowledge the work of Kerry CYPSC and their “Support Pathways for Children and Young People with Additional Needs in Kerry : Information Booklet for Parents and Caregivers” which inspired this resource.

This resource was funded through the CYPSC Healthy Ireland Fund.

For more information about Wexford CYPSC see www.wexfordcypsc.ie

