



United Nations
Educational, Scientific and
Cultural Organization



UNESCO Chair in
Children, Youth and Civic Engagement
Ireland

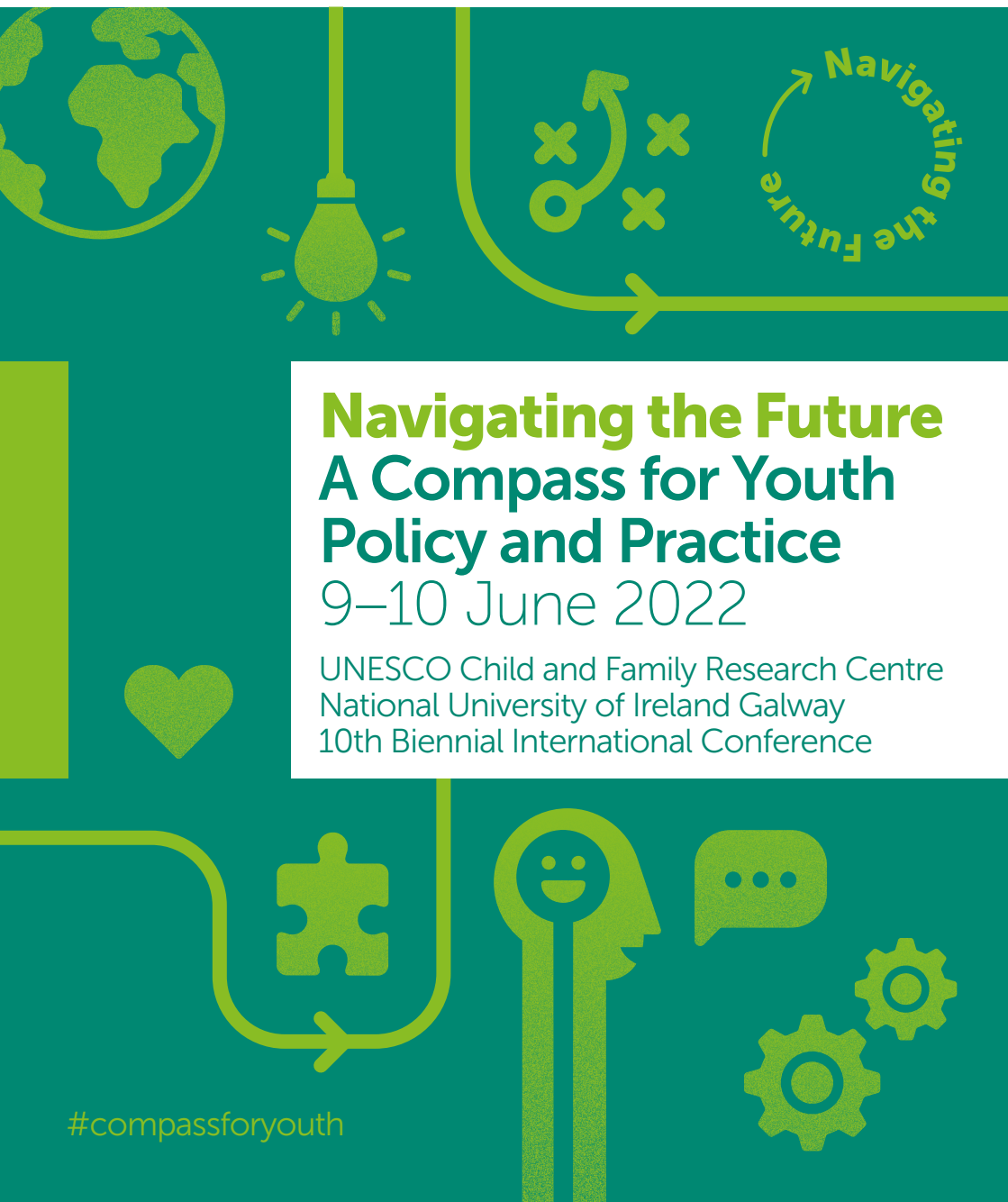


NUI Galway
OÉ Gaillimh



Institute for
Lifecourse and Society

CHILD AND FAMILY RESEARCH CENTRE



Navigating the Future A Compass for Youth Policy and Practice

9–10 June 2022

UNESCO Child and Family Research Centre
National University of Ireland Galway
10th Biennial International Conference

#compassforyouth

Conference Programme

Day One Thursday 9 June 2022

Navigating the Future

09.00–9.45

Registration

Tea and Coffee

09.45–10.00

Opening Address

Professor Ciarán Ó hÓgartaigh, President,
National University of Ireland Galway, Ireland

10.00–10.45

The Future of our Youth:

What Represents the Ideal Compass for Policy and Practice?

Professor Alfgeir L. Kristjansson, West Virginia University, USA

10.45–11.30

Global Priorities for Youth Mental Health

Professor Swaran Singh, University of Warwick, UK

11.30–11.45

Tea and Coffee

11.45–12.00

Youth Voices

12.00–12.45

Youth Participation and Civic Engagement: Future Directions

Dr Danielle Kennan and Professor Pat Dolan, UNESCO Child and
Family Research Centre, National University of Ireland Galway, Ireland

12.45–14.00

Lunch

14.00–15.30

Parallel Sessions

15.30–15.45

Tea and Coffee

15.45–16.30

Navigating Resettlement and Inclusion:

Key Messages from Research with Refugee Children and Youth

Dr Muireann Ní Raghallaigh, University College Dublin, Ireland

16.30–17.15

Children and Young People's Rights in a Digital World

Professor Sonia Livingstone, London School of Economics
and Political Science, UK

17.15–18.30

Evening Reception



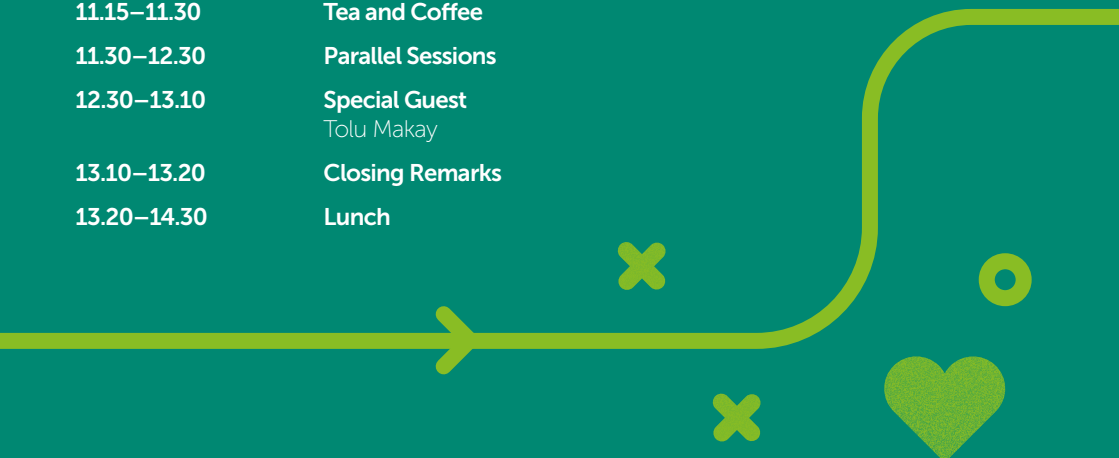
#compassforyouth

Conference Programme

Day Two Friday 10 June 2022



09.30–10.15	Putting the Relationship Back in Youth Mentoring Relationships Professor Renée Spencer, Boston University, USA
10.15–11.00	What Next? Why Now? Reframing our Thinking on Youth Work Mr Sean Campbell, CEO of Foróige, Ireland
11.00–11.15	Youth Voices
11.15–11.30	Tea and Coffee
11.30–12.30	Parallel Sessions
12.30–13.10	Special Guest Tolu Makay
13.10–13.20	Closing Remarks
13.20–14.30	Lunch



Conference Theme

The current generation of youth is coming of age in a period of unprecedented global change, due to the combined effects of the Covid-19 pandemic, technological developments, migration and globalisation. In this conference, we aim to reflect on trends, challenges and options for the current and future experiences of young people. Our core question is how can policy and practice strengthen youth

agency, inclusion and development in a rapidly changing world? The conference will draw on international and national expertise and evidence. Themes and topics to be addressed in keynote presentations and parallel sessions will include mental health and wellbeing, relationships and belonging, youth participation and activism, technology, diversity and inclusion and youth work.

#compassforyouth

Keynote Speakers

Dr Sean Campbell

Seán Campbell has been CEO of Foróige for the last 19 years. A native of Dundalk, Co. Louth, Seán believes passionately in non-formal education as a key driver of social and economic success and much of his 37 year career in youth work has been dedicated to this. A former teacher, Seán is a graduate of University College Dublin and holds a BA and a Higher Diploma in Education. Seán received an Honorary Doctorate of Laws from NUI Galway for his services to the young people of Ireland in 2011 and he is also a member of the National Children and Young People's Advisory Council which advises the Minister for Children, Equality, Disability, Integration and Youth.

Dr Danielle Kennan

Danielle Kennan is a Senior Researcher with the UNESCO Child and Family Research Centre and a Lecturer in Applied Social Science in the School of Political Science and Sociology in NUI Galway. She is currently Programme Director of the MA / PG Dip in Child, Youth and Community. Danielle has an inter-disciplinary expertise in human rights law and the sociology of childhood and youth. Her research interests are in the area of the implementation of children's rights and child and youth participation in decision-making. She has published widely in this field and is co-editor of the book *Child and Youth Participation in Policy, Practice and Research*. In 2014, Danielle co-founded with Professor Pat Dolan the Youth as Researchers programme.

Professor Alfgeir L. Kristjansson

Dr Kristjansson's main area of expertise is adolescent health behaviors with attention to substance use prevention and community health promotion. Currently, Dr Kristjansson is the Principal Investigator (PI) for the 'Young Mountaineer Health Study' funded by the National Institute of Alcohol Abuse and Alcoholism where a cohort of middle school children is followed over a three-year period. Dr Kristjansson also serves as the PI on the CDC-funded West Virginia Prevention Research Center core project titled 'The Integrated Community Engagement (ICE) Collaborative' which is an implementation of the Icelandic Prevention Model in WV. Additionally, Dr Kristjansson is a Lead Scientist for the Planet Youth initiative, which is an international implementation platform for the Icelandic Prevention Model presently being utilized in parts or in whole in over 25 countries ranging from Europe, to the US, Latin America and in Australia.

Professor Pat Dolan

Professor Pat Dolan holds the prestigious UNESCO Chair in Children, Youth and Civic Engagement, the first to be awarded in the Republic of Ireland. The UNESCO Chair delivers a comprehensive programme of work towards the objective of promoting civic engagement and leadership skills among children and youth. Professor Dolan is Director of the Institute for Lifecourse and Society at the National University of Ireland Galway. Professor Dolan has completed an extensive body of research on children youth and family issues including longitudinal research on adolescents and has over 100 peer reviewed academic publications. His research interests include civic engagement, empathy, family support, youth mentoring models, and resilience and social support theory. Professor Dolan has extensive practice and policy experience, both nationally and internationally.



Dr Muireann Ní Raghallaigh

Dr Muireann Ní Raghallaigh is an Associate Professor of Social Work at University College Dublin. Her research focuses on the lived experiences of refugees and international protection applicants, including research on foster care for unaccompanied refugee children; on refugee family reunification; and on the needs of resettled refugee children. She chairs UCD's University of Sanctuary Committee.

Professor Sonia Livingstone

Sonia Livingstone DPhil (Oxon), OBE, FBA, FBPS, FAcSS, FRSA, is a full professor in the Department of Media and Communications, London School of Economics and Political Science. She has published 20 books on media audiences, children and young people's risks and opportunities, media literacy and rights in the digital environment. She directs the Digital Futures Commission (with 5Rights) and Global Kids Online (with UNICEF).

Professor Swaran Singh

Professor Swaran Singh is Professor of Social and Community Psychiatry at the University of Warwick, an NHS consultant psychiatrist, and Associate Medical Director for R&I, Coventry and Warwickshire Partnership Trust. He was a Commissioner for the Equality and Human Rights Commission and led the Independent Investigation into prejudice and discrimination in the Conservative Party (The Singh Investigation, 2021).

Professor Renée Spencer

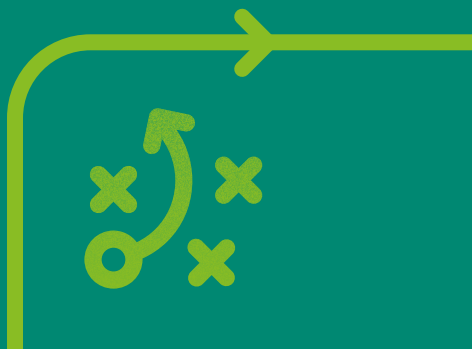
Renée Spencer's is a Professor at the Boston University School of Social Work. Her research is rooted in relational perspectives of human development and focuses on identifying factors that facilitate positive and meaningful youth mentoring relationships. Her work has delineated why and how relationships end prematurely, highlighted how parents are under-engaged stakeholders, and examined how mentors' attitudes and behaviors can enhance or detract from a quality relationship.

Youth Voices

A youth advisory panel consisting of youth volunteers from Foróige provided help and advice on the inclusion of youth voices in this conference.

Special Guest, Tolu Makay

Tolú Makay, singer, songwriter, and performer has ascended in becoming one of Ireland's leading creative voices after releasing her first EP 'Being' in 2020 which provided positivity in a year that felt never-ending. Soon after followed the huge success of her rendition of the classic Saw Doctors song 'N17' accompanied by the RTE Concert Orchestra which made her the highest ever charting female solo artist in Ireland. Following an array of stirring TV appearances where she performed on Other Voices, The Late Late Show and The Tommy Tiernan Show, 2021 concluded with a sold out tour of Ireland including a headline performance at Vicar Street. Topping off a substantially meaningful twelve months Tolú, was recognised by Irish Tatler Woman of The Year for music and Best Female Artists at Black & Irish. The future looks golden as she prepares for her debut album.



Parallel Sessions

We will have presentations from the practice, policy, research and academic communities in relation to the conference themes, which are as follows:

- Mental health and wellbeing
- Relationships and belonging
- Youth participation, civic engagement and activism
- Technology
- Diversity and inclusion
- Youth and/or family work

The UNESCO Child and Family Research Centre (UNESCO CFRC)

The UNESCO Child and Family Research Centre at the School of Political Science and Sociology is part of the Institute for Lifecourse and Society (ILAS) at the National University of Ireland Galway. Founded with support from The Atlantic Philanthropies and the Health Services Executive, the mission of the Centre, established in 2007, is to help create the conditions for excellent policies, services and practices that improve the lives of children, youth and families through research, education and service development. The UCFRC undertakes an

extensive programme of activities nationally and at a global level with core expertise in the areas of Family Support and Youth Development. Research undertaken is strongly connected to applied work for children and families and is relevant to a diverse range of stakeholders including service users, policymakers, politicians, service managers and front-line staff.

For further information please visit our website www.nuigalway.ie/cfrc

#compassforyouth

Fees and Registration

**Early Bird Fee €170,
closing Monday 11 April, 2022**

Full Conference Fee €200
Student Fee €150

Registration is online by credit or laser card only
<https://nuigalwayunesco.clr.events/event/131757>



If you have any queries, please contact:

Gillian Browne

UNESCO Child and Family Research Centre,
School of Political Science and Sociology,
Institute for Lifecourse and Society,
National University of Ireland Galway, Ireland.

Email: Gillian.browne@nuigalway.ie
Tel: +353 (0)91 49 5398



@UNESCO_CFRC



ucfrc.nuig

#compassforyouth